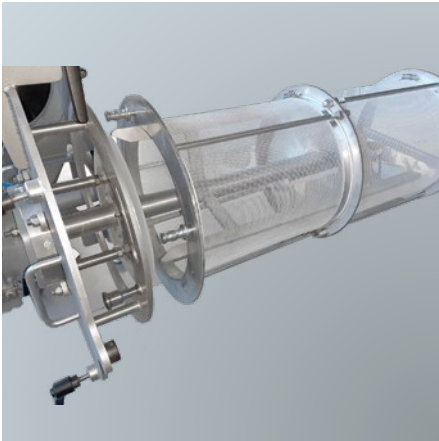
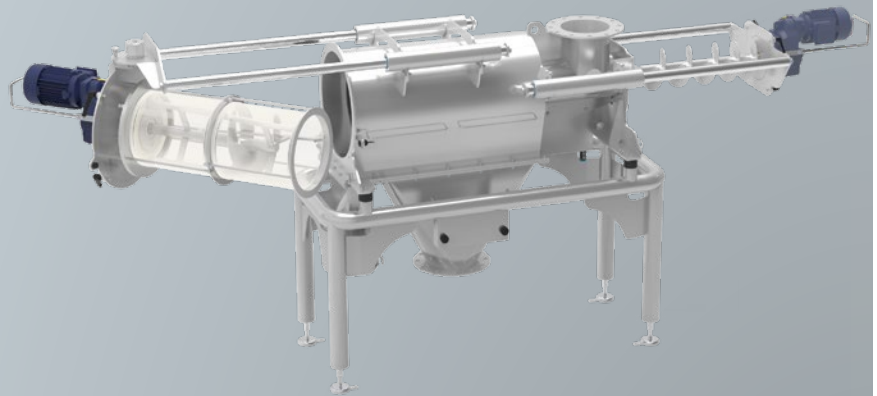


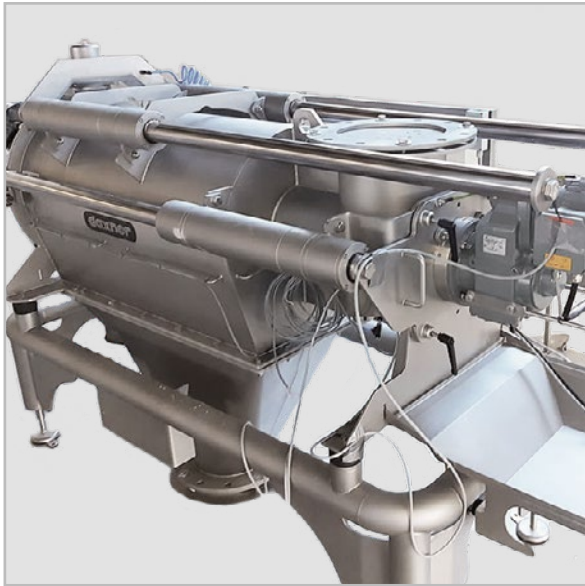
# DOSING & SCREENING MACHINE DM30 EASY CLEAN



- All-in-One - Dosing system & Centrifugal screener
- Ergonomic fast & easy cleaning with pull-out device for screening and dosing unit
- Hygienic Design



Ergonomic fast & easy cleaning  
with pull-out device for  
screening and dosing unit



### Scope of delivery:

- 1 Dosing & Screening machine DM30 Easy Clean
- 1 Air purge fitting with flow monitoring
- 1 collection tray to collect product residue
- 1 Support frame mounted on rubber metal buffers
- 1 overflow NW150
- 1 bagging spout with sack strap DM273 DN150 with grip protection
- 1 Connecting set for the intake pipe
- 1 Discharge hopper DN125

### Special advantages of the DM30:

- All-in-One - Dosing system & Centrifugal screener
- Ergonomic fast & easy cleaning pull-out device for screening and dosing unit
- Hygienic Design
- Monitored air purge fitting with shaft seals
- Machine material in stainless steel AISI 304

### Functional Principle:

The machine consists of a dosing and screening unit. They are powered by two separate motors, which are positioned on the opposing face sides. With the help of the ergonomic pull-out device the screening and dosing unit can simply be pulled out for controls. This enables a closer inspection and the exchanging of screen baskets as well as fast cleaning due to good accessibility.

On the inside of the machine, the rotating paddles connect to the dosing screw. Rotating paddles generate centrifugal force, which presses the material through a stationary screen. Particles smaller than the screen mesh width surpass the screen whereas particle sizes larger than the mesh width pass on to the rough's outlet. Through the centrifugal force and the generated vibrations, the screen jacket keeps clean.

### Design:

- Stainless steel housing with sturdy front plates on both sides
- Rotor shaft with paddle assembly, dosing screw and ball bearing
- Shaft sealing rings and monitored flushing rings
- Removable front plate including clamping lever and safety switch
- Including tilting mechanism
- Pull-out device for rotor shaft, screen basket and dosing screw
- Tilting mechanism for screening unit
- Coated gear motors, Hygienic Design
- Optional dust explosion rated design (ATEX)

### Output:

- Depending on product properties and mesh width
- 5.000 kg/h bis 20.000 kg/h
- Mesh width 600 - 3300 my
- Screen basket material: Nitex

### Option:

- Spare sieve netting Nitex
- Sieve box made of perforated metal plate
- Polished surface finish on the inside of discharge hopper
- Discharge hoppe DN250
- Pipe magnet at inlet
- Motor for high throughput (15.000 kg/h to 30.000 kg/h for wheat flour with MW 2.000 my)

Daxner GmbH  
Vogelweiderstraße 41  
4600 Wels/Austria

Tel.: +43 / 7242 / 44 227-0  
Fax: +43 / 7242 / 44 227-80  
office@daxner.com

Daxner GERMANY GmbH  
97922 Lauda-Königshofen/Germany

Daxner UK  
Daxner USA  
Daxner SOUTH-EAST ASIA  
Daxner RUSSIA  
Daxner LATAM



www.daxner.com